

TECHNICAL **FILE**

604.001.00

WASH'M COMBIRAND MET WERKBLAD

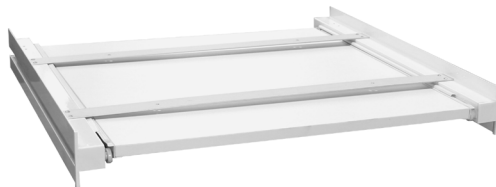


TABLE OF CONTENTS

1.	<u>Introduction</u>	3
1.1	<u>Manufacturer details</u>	3
1.2	<u>Product details</u>	3
1.3	<u>Product specifications</u>	3
2.	<u>Internal risk analysis</u>	4
3.	<u>Product artwork</u>	5
3.1	<u>product sticker</u>	5
3.2	<u>product packaging</u>	5
4.	<u>Applicable norms</u>	5
5.	<u>Modifications</u>	5
6.	<u>Complaints and issues</u>	5
7.	<u>Declarations</u>	6
7.1	<u>Reach declaration</u>	6
7.2	<u>Packaging declaration</u>	7
ANNEX		8
I.	<u>Datasheets</u>	8

1.1 MANUFACTURER DETAILS

Company name	Nedco B.V.
Company address	's Gravenweg 346 2911BK Nieuwerkerk aan den IJssel The Netherlands
Email	info@nedco.nl
Telephone	+31 (0)180 317 199

1.2 PRODUCT DETAILS

Product code	604.001.00
Product name	Wash'm combirand met werkblad
Responsible	Data management Nedco B.V.
Version date	sep-25

1.3 PRODUCT SPECIFICATIONS

Description	Wash'm combirand met werkblad
Colour	White
Material	Aluminium
Shelf Material	Wood
Dimensions	530 x 620 x 70 mm
Weight (gr)	n/a
EAN	8713512065871

2. INTERNAL RISK ANALYSIS

RISK CATEGORY	POSSIBLE CAUSES / DETAILS	CONSEQUENCES	LIKELIHOOD / IMPACT	MITIGATION / RECOMMENDATIONS
Procurement / Suppliers	Poor supplier quality or delays; limited supplier base	Quality issues, stock-outs, reputational damage	Medium / High	Audit suppliers, diversify sourcing, maintain buffer stock
Product specs	Incorrect dimensions or unsuitable design for heavy use	Product mismatch, returns, warranty claims	Medium / High	Data checks, product testing, certification control
Inventory	Over- or understock due to weak forecasting	Lost sales, tied-up capital, write-offs	Medium / Medium	Dynamic forecasting, monitor stock KPIs
Logistics	Picking errors or transport delays	Late or wrong deliveries, customer complaints	Medium / Medium	Barcode scanning, backup transport options
IT / Catalog	Incorrect product info or site downtime	Customer confusion, loss of sales, returns	Medium / Medium	Automate validation, monitor uptime
Customer service	High return rate, unclear warranty process	Higher service costs, unhappy customers	Medium / Medium	Improve product info, streamline aftersales
Finance	Rising costs or price pressure	Reduced margins, loss of competitiveness	High / Medium	Monitor costs, re-negotiate suppliers, adjust pricing
Internal coordination	Poor cross-department communication, no KPIs	Inefficiency, delayed issue detection	Medium / Medium	Regular syncs, define KPIs, dashboard reporting

3.1 PRODUCT **STICKER**

xxx.xxx.xx [article number] [product description NL]	[product EAN code]
[product specifications] [product description ENG] [product description DE] [product description FR]	 0000000000000000

3.2 PRODUCT **PACKAGING**



4. APPLICABLE **NORMS**

Regulation	Description
Regulation (EU) No 1907/2006	REACH - Chemical substances
Directive (EU) 94/62/EC	Packaging materials and waste
Regulation (EU) 2023/988	GPSR - General product safety regulation

5. **MODIFICATION**

Date	Issue	Mitigation

6. COMPLAINTS AND **ISSUES**

Date	Issue	Mitigation

7.1 REACH **DECLARATION**

Nedco B.V. confirms that all products imported into the EU comply with the REACH Regulation (EC) No 1907/2006.

Products Covered:

604.001.00 Wash'm combirand met werkblad

Compliance Responsibilities:

- Registration: Substances in our products imported in quantities of one tonne or more per year are registered with ECHA.
- Evaluation: We cooperate with ECHA for substance evaluation.
- Authorisation: We ensure authorisation for substances requiring it or use suitable alternatives.
- Restrictions: We comply with restrictions on SVHCs and other restricted substances.
- Communication: Safety information is provided to the supply chain, including SDS and SVHC details.
- Substances of Very High Concern (SVHC): We monitor the ECHA candidate list and communicate SVHCs present above 0.1% w/w in our products.

We affirm our commitment to REACH compliance, ensuring our products meet regulatory standards.

Signature:



J. Nederlof

7.2 PACKAGING DECLARATION

Nedco B.V. declares that all packaging materials used in our products comply with the requirements of the European Parliament and Council Directive 94/62/EC on Packaging and Packaging Waste, and its amendments.

Scope of Declaration:

This declaration covers all packaging materials used in the following products imported or manufactured by before mentioned company:

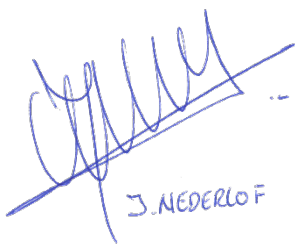
604.001.00 Wash'm combirand met werkblad

Compliance Responsibilities:

- **Material Composition:** Our packaging materials are designed to ensure that the heavy metal content (lead, cadmium, mercury, and hexavalent chromium) does not exceed the limit of 100 ppm by weight.
- **Recyclability:** We ensure that our packaging is designed to facilitate recycling, recovery, and reuse, meeting the essential requirements outlined in Directive 94/62/EC.
- **Reduction of Packaging Waste:** Efforts are made to reduce the weight and volume of packaging to the minimum necessary to maintain product safety and hygiene.
- **Environmental Impact:** Our packaging materials are selected and manufactured to minimize their environmental impact during production, usage, and disposal.
- **Recycling and Recovery:** We comply with national schemes for the return, collection, and recovery of packaging waste, ensuring that our packaging materials contribute to the targets set for recycling and recovery.

By signing this declaration, we affirm our commitment to meeting the requirements of Directive 94/62/EC on Packaging and Packaging Waste. We are dedicated to ensuring that our packaging materials are environmentally friendly and compliant with all regulatory standards.

Signature:



J. Nederlof

ANNEX I.

Datasheets and certificates are available at www.nedco.nl/downloads